

PRODUCT WARNING ⚠ ⚠ ⚠

READ ALL INSTRUCTIONS BEFORE INSTALLING AND USING THIS PRODUCT. TO REDUCE THE RISK OF FIRE, ELECTRIC SHOCK, OR INJURY TO PERSONS, OBSERVE THE FOLLOWING:

- 1. This product is not intended for use by persons (including children) with reduced physical, sensory, or mental capabilities, or a lack of experience with and knowledge, unless they have been given supervision or instruction concerning the use of the appliance by a person responsible for their safety.
- 2. Extreme caution is required before leaving this product operating unattended. Ensure that all warnings have been properly followed and your environment is free of any potential safety hazards. This product must be operated in the upright position only.
- 3. Ensure your power source conforms to the electrical requirements of this product.
- 4. Do not attempt to hardwire this product. Performing any retrofitting actions may result in personal injury and/or electrical damage and will void this product's warranty.
- 5. Be careful not to damage or cut the cords or wire insulation (covering). Do not permit wires to come in contact with any sharp edges.
- 6. If the supply cord is damaged, it must be replaced by the manufacturer, its service agent, or similarly qualified persons in order to avoid a hazard.
- 7. This product must not be used or placed in potentially hazardous locations such as flammable, explosive, electrical, or chemical-laden atmospheres.
- 8. Do not cover any power cords with rugs or other fabric materials.

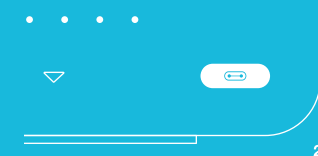
PRODUCT WARNING ⚠ ⚠ ⚠

9. Safety precautions should be exercised during the installation and operation of this product. All service and/or repairs must be done by an authorized technician and/or electrician.

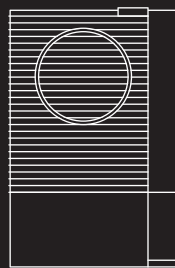
- 10. Do not insert or allow fingers or foreign objects to enter any ventilation or exhaust openings as it may cause electric shock, fire, or damage to this product. Do not block or tamper with this product in any manner while it is in operation.
- 11. Do not depend on the on/off programming as the sole means of shutting power from this product. Unplug the power cord before installing, servicing, or moving this product.
- 12. Do not operate this product while it is damaged, or if it malfunctions, has been dropped, or is damaged in any manner.
- 13. There may be an odor when this product is first operated. This is caused by Zeolite desiccant material and is not a sign that your dehumidifier is not working properly, nor is it harmful to humans or pets. You can vent out the smell by running your dehumidifier in a separate space like a garage or in a dry area outdoors until the odor dissipates.

DO NOT attempt to repair this product yourself!
All service and/or repairs must be done by an authorized technician and/or electrician. Contact our customer service department at support@acinfinity.com or (626) 923-6399 for product and warranty assistance.

WATERPROOF PORT
The port must be dry and capped when not in use to keep liquid and debris out.



PRODUCT CONTENTS



DEHUMIDIFIER UNIT (x1)



DRAINPIPE HOSE (x1)



UIS EXTENSION CORD (M-M) (x1)



HOOK AND LOOP TIE (x4)



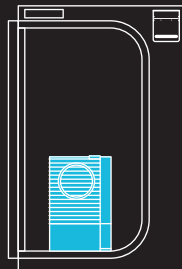
WIRE TIE (x4)

CONFIGURATION SETUP
CLOSED-LOOP SYSTEM

Create a closed-loop system to maximize dehumidification.

INTERNAL

You may place your dehumidifier in your tent.

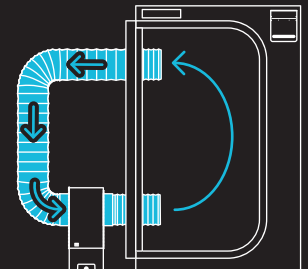


DUCTING (OPTIONAL)

You may use two 6 in. duct tubes (not included) placed in your tent.

Attach your duct tubes with duct clamps and/or duct tape.

Place the exhaust tube (back duct) at the bottom of the tent and place the intake tube (front duct) at the top of the tent.



CONFIGURATION SETUP
OPEN-LOOP SYSTEM

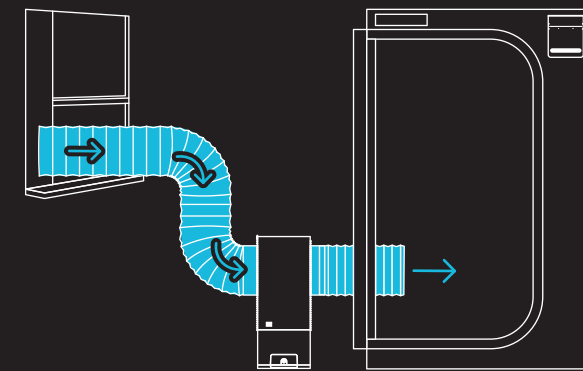
You may use a 6 in. duct tube (not included) to create an open-loop system to dehumidify your tent. Attach your duct tubes with duct clamps and/or duct tape.

INTAKE (OPTIONAL)

You may use a duct tube to pull the air from a target area.

EXHAUST

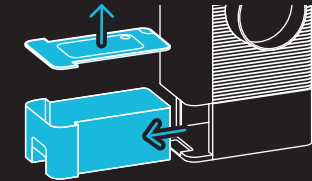
Insert the duct tube into your tent.



DRAINING WATER

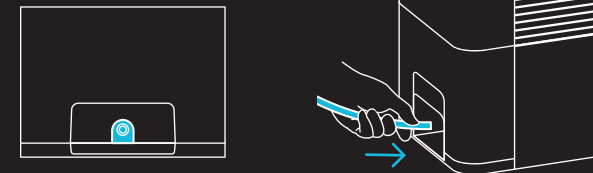
PERIODIC

Pull the condensation tank out, remove its lid, and pour the water out.



CONSISTENT

Remove the drainage cap located at the front of the tank inside the handle. Plug the drainage hole with the drainpipe and route it to a catch tray or drain.

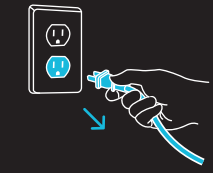


DO NOT use reclaimed water.

CLEANING

STEP 1

Power OFF your dehumidifier before unplugging it.



STEP 2

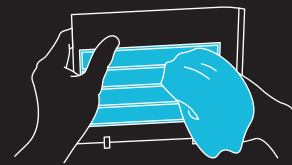
Pull on the "AC Infinity" tab at the front of your dehumidifier to remove the duct adapter.



CLEANING

STEP 3

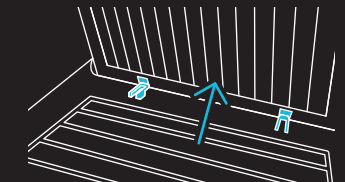
Wipe off any dust and debris from the grille and adapter using a damp cloth. Set aside to dry as needed.



DO NOT use detergent, solvents, or other such chemicals to clean it.

STEP 4

Align the notches at the bottom of the duct adapter into the slots at the front of your dehumidifier.

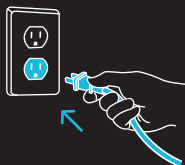


Push the duct adapter into your dehumidifier until you hear it click into place.

CLEANING

STEP 5

Plug your dehumidifier's power plug into an outlet to power it.



PROGRAMMING
SETTINGS



1. POWER BUTTON

Turns your dehumidifier ON/OFF. First-time use defaults to level 6; subsequent uses restore the previous setting.

2. UP/DOWN BUTTONS

Adjusts the level up/down between levels 1-10.

FACTORY RESET

Hold the power and up buttons for 3 seconds to reset your dehumidifier and restore factory settings.



MUTE SOUND

Hold the up and down buttons for 2 seconds to mute/unmute sound.



PROGRAMMING
ALARMS

NO LONGER UPRIGHT

An alarm will sound, and the lights will flash whenever your dehumidifier falls or is tilted past a 45° angle. Your dehumidifier will pause programming until it is back to an upright position.

FULL/MISSING TANK

An alarm will sound, and the lights will flash whenever the condensation tank is full. Your dehumidifier will pause programming until its tank is emptied and replaced. Removing the tank will also trigger this alarm, stopping when you put the tank back in place.

OVERHEAT PROTECTION

An alarm will sound, programming will pause, and 5 of the 10 lights will flash whenever your dehumidifier overheats. If this happens, turn off your dehumidifier, unplug it, and let it sit until it cools before restarting it.

If issues persist, contact our customer service department at support@acinfinity.com or (626) 923-6399 for product and warranty assistance.

PROGRAMMING
ADVANCE PROGRAMMING

This dehumidifier is compatible with specific controller models. Please visit our website www.acinfinity.com for more information.

EXTENSION CABLE

Use the included UIS M-M extension cord to connect your dehumidifier to your controller (not included).

Your controller will override all onboard settings, assume control (parameters must be adjusted on your controller), and shut off your dehumidifier's button functions when connected in this manner.

This port can only be used by the UIS extension cord and cannot be connected to any sensor. If you wish to use sensor functions, the only sensor that can be used is the one directly connected to your smart controller.

The port must be dry and capped when not in use to keep liquid and debris out.



CONTROLLER AI+ shown

MORE INFORMATION

PROGRAMMING



For in-depth programming instructions, scan this QR code to view a digital manual.

WARRANTY

Our warranty program is our commitment to you, the original customer, that product sold by AC Infinity Inc. Will be free from defects for TWO YEARS from the date of purchase. If you have any issues with this product, contact us and we'll happily resolve your problem or issue a full refund!



WEBSITE | www.acinfinity.com
EMAIL | support@acinfinity.com
PHONE | (626) 923-6399, 9 am to 5 pm PST
ADDRESS | 21880 BAKER PARKWAY
CITY OF INDUSTRY, CA 91789
DEALERS
EMAIL | dealers@acinfinity.com
PHONE | (626) 838-4656, 9 am to 5 pm PST

MANUAL CODE DHS2509X1

COPYRIGHT © 2025 AC INFINITY INC. ALL RIGHTS RESERVED
No part of the materials including graphics or logos available in this booklet may be copied, photocopied, reproduced, translated or reduced to any electronic medium or machine readable form, in whole or in part, without specific permission from AC Infinity Inc.

HYDRONE 5
QUICK START GUIDE